

**ICE TECH**

IceBlast  
KG50 Professional



IceBlast  
KG30 Professional



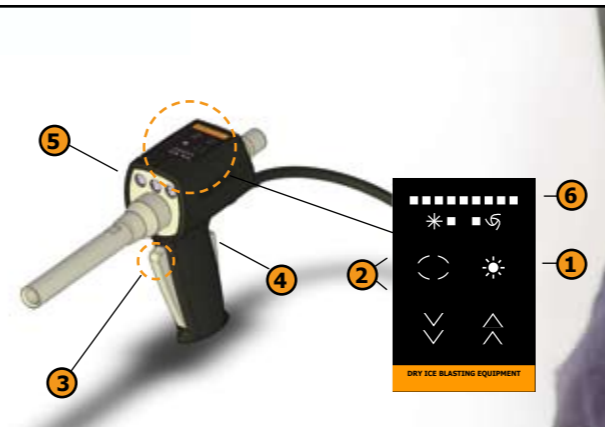
# **ICEBLAST** **KG50 · KG30 Professional** Dry Ice Blasting



IceTech		IceTech	
Ice	Air	Ice	Air
[kg/h]	[Bar]	[kg/h]	[Bar]
45,0	Set ▶ 6,2	45,0	Set ▶ 6,2
0,0	Actual n 2	0,0	Actual 0,0

MENU	
▶ Program 1	▲
Proc	
Proc	5 Setup
◀ Return	
▶ Service	
Language	
◀ Return	
▶ Hour log user	
◀ Return	
▶ View	
Reset	
◀ Return	
7 Hour log total	
▶ View	
Reset	
◀ Return	



01 : 06

03 : 04 : 05

The IceBlast dry ice blasting machines and their accessories have been developed with the purpose of manufacturing cleaning equipment that meets or exceeds the needs of especially industrial companies to minimize consequential costs of industrial cleaning and maintenance. When using dry ice blasting it is often possible to clean a plant or a machine while it is online, without any disassembling and subsequent assembling. Since production downtimes can thus be avoided or reduced drastically, this is a significant economic factor.

Beyond the grease or other surface deposits removed, no cleaning agents or chemicals are left in chains, mechanical parts, etc. There are no incurred costs in connection with the disposal of blasting media and solvents; only the substance removed will need to be disposed of. Labor costs for cleaning and maintenance will often be reduced to a fraction of the present level if dry ice blasting is applied instead of traditional methods of industrial cleaning and surface treatment.

As the names say, the IceBlast KG50 PROFESSIONAL and KG30 PROFESSIONAL are especially suitable for the professional user. The PROFESSIONAL models facilitate data storage of selected blasting parameters (blasting pressure and dry ice consumption per hour) in the machine memory. Data relevant for this function might be blasting parameters for periodically recurring tasks – or parameters for very sensitive items for which the operator has previously arrived at the optimum combination of parameters. This feature benefits the operator in obtaining instant blasting with the correct parameters, resulting in considerable time saving.

Up to 4 programs can be stored in the machine memory. The programs can be locked, and only a password can unlock the machine so as to bypass these fixed programs. This feature is an advantage especially in large production companies since a more uniform cleaning is achieved and an overconsumption of dry ice due to incorrectly set blasting parameters is avoided. In addition to the program/memory function, the PROFESSIONAL models have a number of features, e.g.: Hour counter, multiple language display, error log, earthing/grounding indicator (prevents machine start if insufficiently earthed/grounded), and a large service menu with machine adjustment possibilities.



# ICEBLAST KG50 • KG30 PROFESSIONAL

Dry ice blasting is a revolutionary blasting method that uses dry ice pellets with a diameter of 3 mm (rice-sized) as the blasting media. The pellets consist of solid CO<sub>2</sub> at a temperature of -79°C/-110°F. The process is very environmentally-friendly and provides a fast and effective alternative to traditional methods of industrial cleaning and surface treatment.

### 01: User-Friendly MultiTouch Control Panel which Includes:

- Memory for storing various blasting parameters
- Service menu with error log, adjustment possibilities, etc.
- Earthing/grounding indicator (machine start only possible when sufficiently earthed/grounded)
- Display of actual dry ice consumption
- Display of actual blasting pressure
- Multiple language display
- Password-protection

### 02: Blasting Hose

The blasting hose is made of a flexible fibre-reinforced silicone tube with a protective sleeve. Safety couplings allow swift and safe connection to the machine and the blasting gun.

### 03: Blasting Guns with and without Remote Control

#### IceGun PROFESSIONAL MultiTouch:

- 5 Light
- 4 Safety switch
- 3 Two-step trigger
  - Blasting with dry ice AND air
  - Or blasting with AIR ONLY
- 6 LED light indication of blasting pressure and dry ice consumption

#### Remote Control of:

- 1 Light ON/OFF
- 2 Dry ice consumption
- 2 Blasting pressure

#### IceGun PROFESSIONAL:

- 4 Safety switch
- 3 Two-step trigger
  - Blasting with dry ice AND air
  - Or blasting with AIR ONLY

### 04: Remote Control from the Blasting Gun

The major advantage of the IceGun PRO MultiTouch is that the blasting parameters can be controlled remotely from the blasting gun. With this Multi-Touch blasting gun the operator will not have to stop the blasting operation in order to adjust the parameters on the machine. This means that the blasting machine does not necessarily have to be located near the item to be dry ice blasted.

### 05: Safety Couplings

IceTech dry ice blasting machines are fitted with safety couplings between machine, blasting hose and blasting gun. The safety couplings

- lock automatically when pressurized
- stay locked during the blasting process
- are fitted with twisting stop
- can rotate 320° - max. IceGun mobility
- prevent hose or cable damage due to excessive twisting/winding

### 06: Optimum Safety – Earthing/Grounding Indicator

To ensure optimum safety, the PROFESSIONAL models are fitted with an earthing/grounding indicator that prevents machine start in case of insufficient earth/ground connection. This will give the user optimum protection against static electricity.

### 07: Special Nozzles and Accessories

The blasting guns are modularly designed and can be combined with a broad range of nozzles and accessories. This makes them adaptable to suit each individual blasting application, thus it is always possible to obtain maximum cleaning efficiency.

### 08: Nozzle Box Storage in the Machine

As a supplement to IceTech's wide range of nozzle boxes that includes the most commonly used types of nozzles, nozzle inserts and accessories, IceTech has now introduced the IT3 box of nozzles. The IT3 box is dimensioned to fit into the machine under the pellet tank of the PROFESSIONAL models.



05

02

08

07



**TECHNICAL DATA**

**IceBlast KG30 PRO ¾"**

**Dim. mm/inch**  
 Length: 580 / 22.8  
 Width: 550 / 21.6  
 Height: 800 / 31.4

**Weight**  
 kg: 85  
 lbs: 187

**Dry Ice Capacity**  
 kg: 30  
 lbs: 66

**Dry Ice Consumption**  
 kg/h: 0-100  
 lbs/h: 0-220  
 infinitely adjustable

**Supply Pressure**  
 bar: min. 5 - max. 16  
 psi: min. 72 - max. 232

**Blasting Pressure**  
 bar: min. 2 - max. 16  
 psi: min. 29 - max. 232

**Air Consumption**  
 m³: 3-11  
 cfm: 106-388  
 depending on nozzle  
 combination

**Compressed Air Connection**  
 1" claw coupling  
 The compressed air must be kept clean and free of oil, foreign bodies and water

**Power Consumption**  
 110/230 V  
 AC 50-60 Hz  
 900 W  
 CEE 17 earthed

**Blasting hose, ¾"**

**Single Hose System**

**Noise**  
 Noise level 60-120 dB(A)  
 depending on blasting pressure, nozzle combination and material surface

**IceGun PROFESSIONAL MultiTouch**  
**Dim. mm/inch**  
**Including nozzle and nozzle holder**

Length: 315 / 12.4  
 Width: 50 / 1.96  
 Height: 185 / 7.28

**Weight**  
**Including nozzle and nozzle holder**  
 kg: 1  
 lbs: 2.20

**Two-Step Blasting**  
 Air  
 Air and dry ice

**Remote Control**

**Light**

**IceBlast KG50 PRO ¾"**

**Dim. mm/inch**  
 Length: 700 / 27.5  
 Width: 550 / 21.6  
 Height: 900 / 35.4

**Weight**  
 kg: 90  
 lbs: 198

**Dry Ice Capacity**  
 kg: 50  
 lbs: 110

**Dry Ice Consumption**  
 kg/h: 0-100  
 lbs/h: 0-220  
 infinitely adjustable

**Supply Pressure**  
 bar: min. 5 - max. 16  
 psi: min. 72 - max. 232

**Blasting Pressure**  
 bar: min. 2 - max. 16  
 psi: min. 29 - max. 232

**Air Consumption**  
 m³: 3-11  
 cfm: 106-388  
 depending on nozzle  
 combination

**Compressed Air Connection**  
 1" claw coupling  
 The compressed air must be kept clean and free of oil, foreign bodies and water

**Power Consumption**  
 110/230 V  
 AC 50-60 Hz  
 900 W  
 CEE 17 earthed

**Blasting hose, ¾"**

**Single Hose System**

**Noise**  
 Noise level 60-120 dB(A)  
 depending on blasting pressure, nozzle combination and material surface

**IceGun PROFESSIONAL**  
**Dim. mm/inch**  
**Including nozzle and nozzle holder**

Length: 315 / 12.4  
 Width: 50 / 1.96  
 Height: 185 / 7.28

**Weight**  
**Including nozzle and nozzle holder**  
 kg: 1  
 lbs: 2.20

**Two-Step Blasting**  
 Air  
 Air and dry ice

**IceBlast KG50 PRO 1"**

**Dim. mm/inch**  
 Length: 700 / 27.5  
 Width: 550 / 21.6  
 Height: 900 / 35.4

**Weight**  
 kg: 90  
 lbs: 198

**Dry Ice Capacity**  
 kg: 50  
 lbs: 110

**Dry Ice Consumption**  
 kg/h: 0-150  
 (0-220 optional)  
 lbs/h: 0-330  
 (0-485 optional)  
 infinitely adjustable

**Supply Pressure**  
 bar: min. 5 - max. 16  
 psi: min. 72 - max. 232

**Blasting Pressure**  
 bar: min. 2 - max. 16  
 psi: min. 29 - max. 232

**Air Consumption**  
 m³: 3-16  
 cfm: 106-565  
 depending on nozzle  
 combination

**Compressed Air Connection**  
 1.5" claw coupling  
 The compressed air must be kept clean and free of oil, foreign bodies and water

**Power Consumption**  
 110/230 V  
 AC 50-60 Hz  
 900 W  
 CEE 17 earthed

**Blasting hose, 1"**

**Single Hose System**

**Noise**  
 Noise level 60-120 dB(A)  
 depending on blasting pressure, nozzle combination and material surface

**Head Office Denmark**  
**IceTech A/S**  
 Industrivej 37  
 DK-6740 Bramming  
 Phone: +45 76 56 15 00  
 Fax: +45 76 56 15 09  
 E-mail: icetech@icetech.dk  
 www.icetech.dk

**Head Office Germany**  
**IceTech Deutschland GmbH**  
 Industriestraße 11  
 DE-56598 Rheinbrohl  
 Phone: +49 (0) 2635 923 164  
 Fax: +49 (0) 2635 923 165  
 E-mail: icetech@icetech.dk  
 www.icetech-deutschland.de

**Head Office United States**  
**IceTech America Inc.**  
 8050 Beckett Center Drive  
 Suite 316  
 West Chester, Ohio 45069 USA  
 Phone: (+1) 513-942-4144  
 Fax: (+1) 513-942-4244  
 Toll free: (+1) 877-693-7073  
 E-mail: icetech@icetech-usa.com  
 www.icetech-usa.com

